



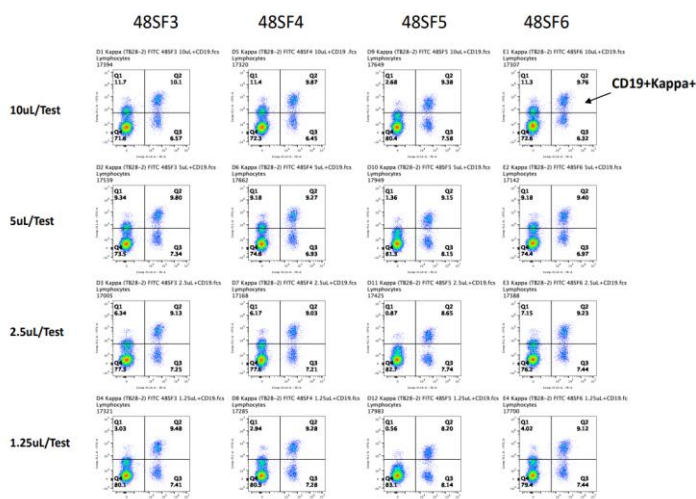
SEPTEMBER 2022

CBI Newsletter

Kappa and Lambda light chain in the diagnosis of B cell lymphoproliferative disorders

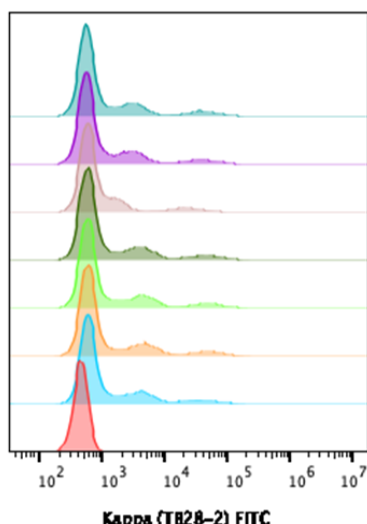
Data CAPRICO Biotechnologies Inc.

Kappa (TB28-2) FITC in Healthy donor PBMC



Anti-kappa light Chain:

Clone: **TB28-2** specifically recognizes both soluble and surface expressing kappa light chains of human immunoglobulins. Immunoglobulins bearing **kappa light chains** are present on approximately **60%** of normal B lymphocytes and all Igk+ leukemic cells. **In serum**, anti-kappa reacts with immunoglobulins bearing kappa light chains as well as free kappa light chains.



	Sample Name	Freq. of Parent	FITC-H+ = Median : Comp-FLL-H
	B10 Kappa (TB28-2) FITC 48SF6 20uL.fcs	58.8	4280
	B9 Kappa (TB28-2) FITC 48SF6.fcs	58.1	4198
	C7 Kappa (TB28-2) FITC 48SF5.fcs	59.0	5465
	C6 Kappa (TB28-2) FITC 48SF4.fcs	58.1	5309
	C5 Kappa (TB28-2) FITC 48SF3.fcs	59.6	5554
	C4 Kappa (TB28-2) FITC 48SF2.fcs	59.1	5885
	C3 Kappa (TB28-2) FITC 48SF1.fcs	59.4	5191
	C10 FMO PBMC 017-053 .fcs	59.6	1640



BENEFITS!

CBI Kappa and Lambda light chain:

BENEFITS:	Monoclonal
No-specificity	Less susceptible
Binding	Single Epitope

- ✓ Monoclonal antibodies are more specific and exhibit lower background staining.
- ✓ Highly stable in serial titration assessing and less variation in lots-to-lots products.
- ✓ Our specialists can guide you

All conjugations available!

APC	FITC	PE-CF594	iFluor™ 700	iFluor™ 488	PE- Cyanine7	APC- Cyanine7	APC-iFluor™ 700
Biotin	PE	PerCP	mFluor™ 450	iFluor™ 647	Purified	PE- Cyanine5	PerCP-Cyanine5.5

Free samples, 100tests, 200 tests

RUO & ASR available!

References

1. Stetler-Stevenson M et al. 2001, Semin Hematol. 38:111-123.
2. Weinberg DS et al 1984. Blood. 63:1080-1087.
3. Picker LJ et al 1987. Am J Pathol. 1987;128:181-201.
4. Foon KA et al 1986. Blood. 68:1-31.
5. Smith BR et al 1984. N Engl J Med. 311:1476-1481.
6. Oertel J et al 1991. Clin Lab Haematol. 13:33-40.
7. Kuritani T et al 1982. J. Exp. Med. 155: 839-851.



Caprico Biotechnologies is committed to
100% customer satisfaction.

For more information

✉ email us at info@capricobio.com or ☎ call 1-678-691-2143

🌐 www.capricobio.com

📍 400 Pinnacle Way, Suite 430 Norcross, GA 30071