



An important marker—Ki-67—to estimate a tumor's proliferation

The **Ki-67** antibody was first described to recognize a nuclear protein only present in proliferating cells. **Ki-67** has been extensively used to predict the growth rate of many cancer samples from human patients. Flow cytometric analysis of **Ki-67** was described to determine the growth fraction of lymphoma cell lines and further applied to a cell cycle and cell proliferation analysis on many cancer cells and hematopoietic stem cells. More frequently, Ki-67 analysis is used in oncology to estimate a tumor's proliferation index. Detection of **Ki-67** is widely used as an important marker of certain conditions such as breast cancer.

Representative data CAPRICO

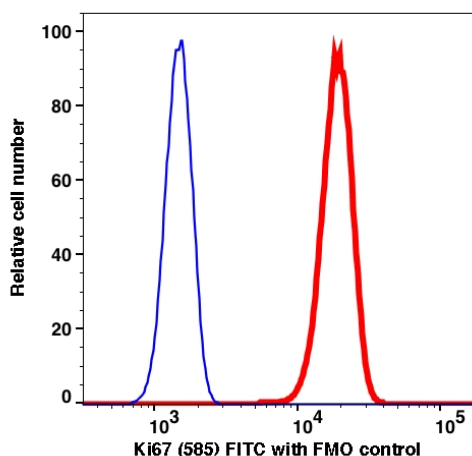


Figure. Fixed and perm SP2/0 gated cells stained with FITC conjugated Ki67 (clone 585) (red histogram). Fixed and perm SP2/0 gated cells are used as FMO control (Blue histogram).

References

1. Gerdes J, et al. Cell cycle analysis of a cell proliferation-associated human nuclear antigen defined by the monoclonal antibody Ki-67. *J Immunol.* 1984;133:1710–1715.
2. Schluuter C, et al. The cell proliferation-associated antigen of antibody Ki-67: a very large, ubiquitous nuclear protein with numerous repeated elements, representing a new kind of cell cycle-maintaining proteins. *J. Cell Biol*123,513–522.
3. Yerushalmi R, et al. Ki67 in breast cancer: prognostic and predictive potential". *The Lancet. Oncology.* 11 (2): 174–83



Caprico Biotechnologies

Our available products:

PRODUCT	CLONE	CATALOG#
Ki-67 FITC	585	112415

- ✓ **Additional conjugations available since we produce everything inhouse in Norcross, USA**
- ✓ **The CBI team is happy to prioritize your dye**

AUGUST-2022

NEW PRODUCTS

Product	Size	Clone	Catalog #
CD25 PE-Cyanine7	100Test	7G7B6	102685
CD24 PerCP-Cyanine5.5	100Test	SN3	123365
CD41a FITC	100Test	962C1	117715
CD36 PE	100Test	1E8	117525
CD27 PE-Cyanine7	100Test	C-813.21	125785
CD45RA PE-Cyanine7	100Test	OTH-74D4	108785
CD43 PE	100Test	DF-T1	116825
Ki-67 FITC	100Test	585	112415

200 tests & ASR & free test size available!



QUALITY



EFFICIENCY



FLEXIBILITY



AFFORDABILITY

Caprico Biotechnologies is committed to
100% customer satisfaction.

For more information

✉ email us at info@capricobio.com or ☎ call 1-678-691-2143

🌐 www.capricobio.com

📍 400 Pinnacle Way, Suite 430 Norcross, GA 30071

CAPRICO

www.capricobio.com