


**KRISHGEN BioSystems**

OUR REAGENTS, YOUR RESEARCH

# DIABETES RESEARCH ELISA



A RANGE SPECIFIC AND SENSITIVE ASSAYS  
TO MEASURE AND MONITOR INSULIN  
ANALOGS, GLP-1 AGONISTS AND POPULAR  
MARKERS.

**Human, Rat, Mouse and other Animal ELISA  
& Drug Assays for PK / ADA studies**

Learn more about our products:

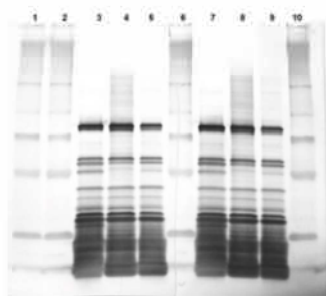
[www.krishgen.biz](http://www.krishgen.biz)  
[kbiinfo@krishgen.com](mailto:kbiinfo@krishgen.com)

**D E N I S**  
MAISON FONDÉE EN 1862



Krishgen's offers a range of highly validated insulin and metabolism target related drug and biomarker ELISA to support and accelerate research on diabetes and other metabolism related diseases. Each kit is put through rigorous testing to ensure high precision, accuracy, sensitivity, and specificity. You can be confident that you will obtain reproducible results, day-after-day, and lot-after-lot. Our comprehensive product offering, along with expert scientific support, empowers researchers to explore novel biomarkers, investigate intricate disease pathways, and develop innovative therapeutic interventions.

- Fully validated assays for accurate, sensitive results
- Calibrators / standards used in the kit are validated for originator drug candidate
- Break-apart wells, shipped at 2-8 deg C
- validated as per EMA/FDA guidelines in line with ICH Code for Harmonization of Biological Assays
- Cross reactivity data available
- Robust Lot-to-Lot consistency and reproducibility in data Standard
- 96 well break-apart wells
- Competitively priced



#### Production in a ISO 13485 certified facility

Our manufacturing lab is ISO 13485 and CDSCO (India) certified, with Class 7 / Class 8 cleanrooms and Air Handling Units to reduce contamination. Automated plate coating lines and handling equipment further reduce lot variation.

#### From a Trusted Manufacturer

Krishgen's reliable ELISA have been used in 3000+ peer-reviewed publications in journals around the world. Industry users include scientists from the world's leading pharmaceutical companies.

### GLP-1 AGONIST DRUG ELISA

GLP-1 agonist drugs play a pivotal role in diabetes management by enhancing insulin secretion, suppressing glucagon release, and promoting weight loss. Ongoing research is focused on improving drug efficacy, exploring combination therapies, and developing long-acting formulations for enhanced patient convenience, representing a promising future for GLP-1 agonist drugs in diabetes treatment. Krishgen offers both ELISA for detection of the drug and biosimilars, along with neutralising antibody screening assays.

Drug Name	Target	mAB ELISA	nAb ELISA
Semgalutide	GLP-1R	KBI5030	KBI9030
Liraglutide	GLP-1R	KBI5020	KBN5020
Exenatide	GLP-1R	KBI5013	
Dulaglutide	GLP-1R	coming soon.	KBN1280
Lixisenatide	GLP-1R	KBI5021	

### GLP-1 + GIP DUAL TARGETING DRUG ELISA

Newly launched!

NEW	Drug Name	Target	mAB ELISA
	Tirzepatide	GLP-1 + GIP	KOD1027

Krishgen also offers a comprehensive range of ELISA kits for Insulin research, including drug and anti-drug antibody ELISA as well as biomarker assays in both human and animal species.

### INSULIN RESEARCH ELISA

*Advancements in understanding the intricacies of insulin signaling pathways are driving the development of novel targeted therapies, including insulin analogues and mimetics. Future research aims to uncover new therapeutic targets and improve insulin delivery systems for enhanced glycemic control and improved quality of life for individuals with diabetes.*

Target	Human ELISA	Rat ELISA	Mouse ELISA	Other Species ELISA
Insulin	✓	✓	✓	✓
Pro-Insulin	✓	✓	✓	✓
Insulin Receptor	✓	✓	✓	✓
Insulin-Like Growth Factor	✓	✓	✓	✓
Insulin Like Protein	✓	✓	✓	✓

Drug Name	mAb ELISA
Lispro	KBI2003
Aspart	KBI2002
Glargine	KBI2001
Degludec	KBI2005

### ELISA FOR NOVEL TARGETS IN DIABETES RESEARCH

Drug Targets	Human ELISA	Rat ELISA	Mouse ELISA	Other Species
Dopamine Receptors	KBH1276, KBH1311	✓	✓	✓
Amylin Receptors	KBH0016	✓	✓	✓
GCGR Receptor	KBH5330	✓	✓	✓
GABA Receptors	coming soon*	✓	✓	✓
GLP1 Receptors	KBH3127	✓	✓	✓
GCK Kinases	KBH8427	✓	✓	✓
AMPK Kinases	KBH0746	✓	✓	✓
GLUT1 (SLC2A1)	KBH2020	✓	✓	✓
GLUT4 (SLC2A4)	KBH1397	✓	✓	✓
GLUT10 (SLC2A10)	KBH9166	✓	✓	✓
GLUT12 (SLC2A12)	KBH9168	✓	✓	✓
KATP channel	coming soon*	✓	✓	✓

All Krishgen ELISA are validated for specific species matrices. Looking to use our ELISA in a matrix not yet validated?  
Get in touch with us for custom optimisation.

## DIDN'T FIND WHAT YOU'RE LOOKING FOR?

Krishgen manufactures 20,000+ ELISA across more than 10 species. Talk to our technical team to find the right product for you at [kbiinfo@krishgen.com](mailto:kbiinfo@krishgen.com).

Or, get in touch with us to custom develop your assay. Our custom services can help designing and producing sensitive, validated kits for your target(s) of interest.

For more information, please reach out to us at [services@krishgen.com](mailto:services@krishgen.com).

**KRISHGEN BioSystems**  
OUR REAGENTS, YOUR RESEARCH

**D E N I S**  
MAISON FONDÉE EN 1862



DENISファーマ株式会社

TEL : 03-5510-2932 / e-mail : [info@denispharma.jp](mailto:info@denispharma.jp)

東京都千代田区霞が関三丁目6番7号

<https://research.sceti.co.jp/>