

Description

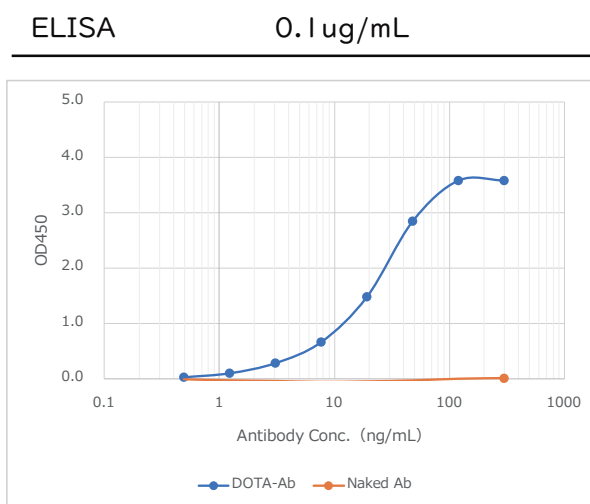
DOTA is delivered from a macrocyclic compound called cyclen, which function as a metal chelator.

Code No.	PP-ABI23104-0R
Clone No.	ABI23104
Lot.	B-1
Concentration	1mg/mL
Volume	100uL
Ig Class	G1

Genbank	
Origin	Recombinant CHO Cell culture supernatant
Epitope	
Specificity	DOTA
Purification	Affinity chromatography with Protein A
Formulation	DPBS with 0.1% NaN ₃ as a preservative

Application/Recommended concentration

in order to obtain the best result, optimal working dilution should be determined by each individual user.



Western Blot	Not tested
Non Reducing Western Blot	Not tested
Immunoprecipitation	Not tested
Supershift Assay	Not tested
Chromatin immunoprecipitation	Not tested
Immunohistochemistry	Not tested

Store at 2-8°C up to one month. For long term storage, the solution may be frozen in working aliquots. Repeated freezing and thawing is NOT recommended. Storage in a frost-free freezer is NOT recommended.

Notes

Sodium azide may react with lead and copper plumbing to form explosive metal azides.

Flush with large amount of water during disposal.

This product is research use only, Not for diagnostic or therapeutic use.

